



THE  
LUTHERAN  
WORLD  
FEDERATION

World Service

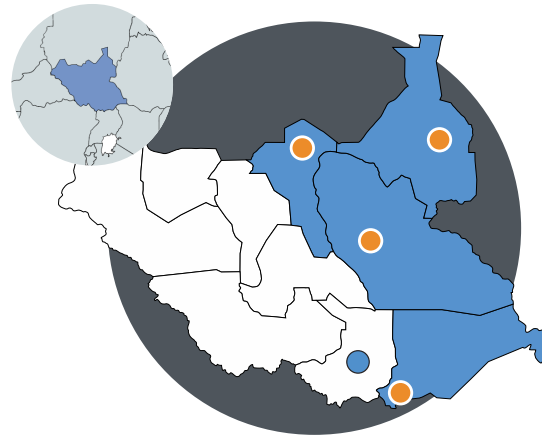
Member of Alliance



LWF South Sudan  
2023

## About us

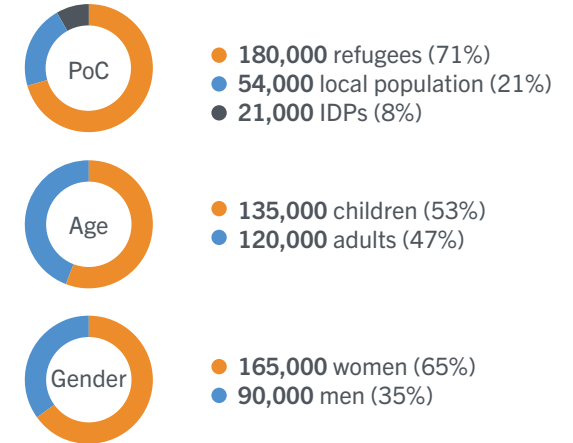
LWF South Sudan supports vulnerable and excluded children, women and men access opportunities that build their resilience. We are doing this by providing a wide range of multi-sectoral interventions and working with refugees, Internally Displaced Persons (IDPs), local communities and returnees. Most of our work is done through direct implementation and in partnership with national NGOs.



- Country office
  - Juba
- Operations
  - Ruweng Administrative Area (Jamjang)
  - Upper Nile (Maban)
  - Jongelei (Panyagor)
  - Eastern Equatoria (Magwi)
- Field offices
  - Jamjang
  - Maban
  - Panyagor
  - Magwi

## Who we work with

In 2022, LWF South Sudan supported **255,000** Persons of Concern (PoC)

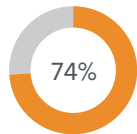


“I want to complete my secondary education and, more importantly, I want to show my home community in Nuba and the world that people with hearing impairments can learn and contribute to the development of the country. This program has helped me get closer to that goal.”

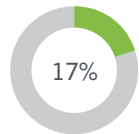
Sarah Philemon, a 32-year-old mother enrolled in the Accelerated Learning Program (ALP). She lost her hearing at age 15 when her village was bombed.

# Our impact

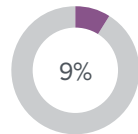
LWF South Sudan's country strategy for 2019-2024 relies on three programmatic areas: Livelihoods, Quality Services, Protection and Social Cohesion. Additionally, Gender Justice, Climate Justice and Human Rights are cross-cutting approaches that we apply in all sectors of intervention. For 2022, LWF South Sudan invested 12.5 million euros in programming. Expenditure and its impact are as follow:



**Quality Services**



**Livelihoods**



**Protection and social cohesion**



## QUALITY SERVICES

**76,570** girls and boys accessed primary education  
**92,377** people benefitted from water and sanitation facilities, hygiene and dignity kits.



## LIVELIHOODS

**1,500** people were provided with vegetable farming kits and trained in agronomic best practices  
**27,852** people in total were supported in food security and livelihoods



## PROTECTION & SOCIAL COHESION

**683** unaccompanied and separated children went through case management  
**240** members of community-based structures participated in trainings



## CROSS-CUTTING FOCUS AREAS

Rights-Based and Local to Global Approach  
 Child Protection  
 Gender Justice & Women's Empowerment  
 Climate Justice



“As my vegetables grow, I harvest, cook and feed my children with vegetable. I am very happy about that. My livelihood is more stable thanks to the vegetables production. I am supplying the market and earn monthly income from selling green vegetables to consumers in Panyagor. I have been doing this since November 2021 which has helped me cover other basic needs such as clothes and medicine for my family.”

Awak Aguer Ajang is one of the 1,500 participants of the Emergency Food Production project funded by the FAO. The project focuses on building resilience during the dry season for the most vulnerable people.

# Contact us



**Regional Program Coordinator (based in Geneva)**  
 Lokiru MATENDO  
 lokiru.yohana@lutheranworld.org

**Country Representative (based in Juba)**  
 Mika JOKIVUORI  
 mika.jokivuori@lutheranworld.org



**Lutheran World Federation South Sudan**  
 NCA Compound, Buluk, Juba  
 +211 912 121 411



Follow us here!



More news here!



# Our partners

