



THE LUTHERAN WORLD FEDERATION

World Service

Member of alliance

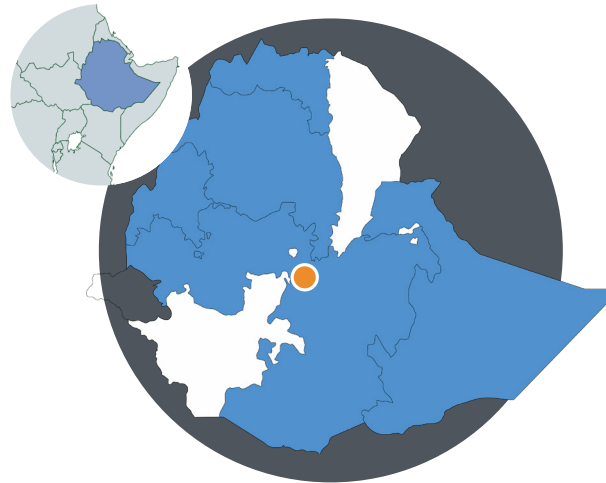


# LWF Ethiopia

2023

## About us

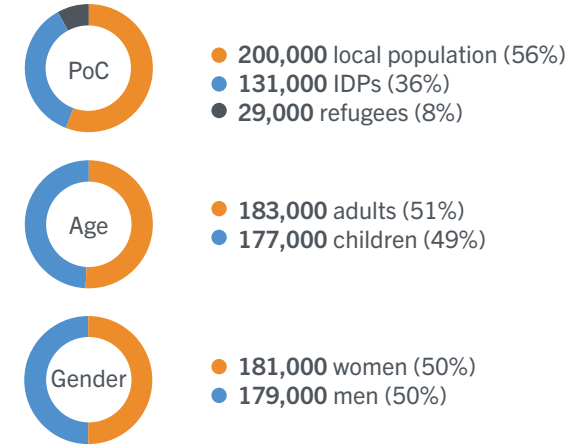
Ethiopia is one of the world's fastest growing countries with an estimated population of 110 million people. Yet despite increased economic growth in the past decade, Ethiopia still ranks near the bottom of the Human Development Index. LWF Ethiopia responds to crises and needs assisting refugees, Internally Displaced People (IDPs) and vulnerable local communities.



- Country office
  - Addis Ababa
- Operations
  - Tigray
  - Amhara
  - Gambella
  - Oromia
  - Somali

## Who we work with

In 2022, LWF Ethiopia supported more than **360,000** Persons of Concern (PoC)

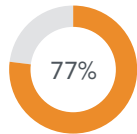


“The solar panel I received from LWF gives me light during the night. Two of my children use the light to read and do their homework. I use the light to prepare food and other things in the evening. In the past, I used to stay up until 8 pm and work in complete darkness, but now I can even stay up until late at night and have enough time to finish all my work.”

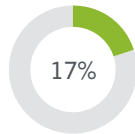
Rukiya Mohamed, a 55-year-old woman, lives in one of the 57 households that received a solar panel and lamp from LWF Ethiopia.

# Our impact

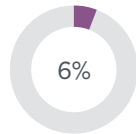
LWF Ethiopia's work is grounded in three programmatic areas: livelihoods, quality services and increasingly in protection and social cohesion following the Civil Society Proclamation. Gender and climate justice are key areas of focus that cut across all of LWF Ethiopia's programming. The sections below highlight the work of LWF Ethiopia and the achievements recorded in the three programmatic areas in 2022. An investment of 5,3 million euros was made in programming in 2022.



Quality Services



Livelihoods



Protection and social cohesion



## QUALITY SERVICES

7,200 individuals benefitted from a food assistance project in the Lasta woreda  
24,305 individuals fleeing conflicts in the Northern Amhara region were supported through shelter and non-food items distribution



## LIVELIHOODS

400,000 trees were planted in degraded and communal lands with a survival rate of 78%  
400 vulnerable farmers were covered by a micro climate insurance to cover harvest loss



## PROTECTION & SOCIAL COHESION

860 children benefitted from child friendly spaces  
34 legal cases identified by a new LWF mobile court were referred to a service provider for legal counselling



## CROSS-CUTTING FOCUS AREAS

Gender justice  
Climate justice  
Core humanitarian standards  
Empowerment and rights-based approach



In the Seba Kare IDP camp near Mekelle, LWF successfully constructed a water supply system. Prior to that, water had to be brought by truck to the extremely arid region. As the new system was completed, potable water became accessible to almost 11,000 internally displaced people and host community members.

"LWF and the other organizations that collaborated, can now use the funds we had put aside for water trucking for other life-saving interventions, such as provision of emergency shelter, relief goods, emergency food supply, protection services and community based psychosocial support among others," says Charles Masanga, LWF Ethiopia Program Coordinator.

# Contact us



**Regional Program Coordinator (based in Geneva)**  
Miina PUNTILA  
miina.puntila@lutheranworld.org

**Country Representative (based in Addis Ababa)**  
Sophie GEBREYES  
lwf.ethiopia@lutheranworld.org



**Lutheran World Federation Ethiopia**  
Arada sub-city, District 06, No. 910  
P.O. Box 40132, Addis Ababa, Ethiopia  
+251 1111553288/0308



More pictures [here!](#)



More news [here!](#)



# Our partners

