



THE
LUTHERAN
WORLD
FEDERATION

World Service

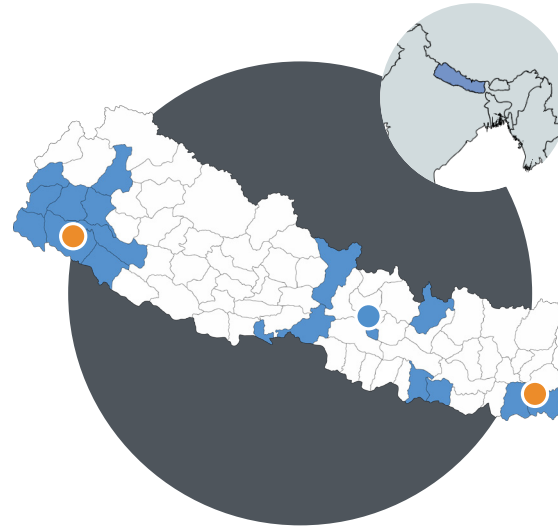
Member of **actalliance**



LWF Nepal
2023

About us

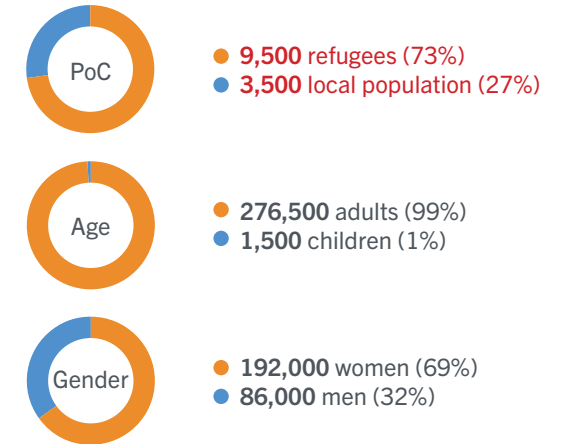
In Nepal, the Lutheran World Federation (LWF) World Service supports refugees, marginalized and socially excluded local community members. A human rights-based approach as well as equality and social inclusion are promoted in 18 districts across Nepal.



- Country office
 - Kathmandu
- Field offices
 - Dhanghadi
 - Jhapa
- Operations
 - Karnali
 - Lumbini
 - Gandaki
 - Sudharpashim
 - Bagmati
 - Madhesh
 - Koshi

Who we work with

In 2022, LWF Nepal supported more than **278,000** Persons of Concern (PoC)



“I never went to school when I lived in Bhutan. I was forced to leave my country when I was 15 and I started studying in Nepal when I was 18. After gaining access to education, I was able to use the information provided on the GeoKrishi App. It helped me in successful farming and I could harvest more food for me and my family.”

Bina Chhetri is one of the 385 lead farmers and facilitators, who worked as digital champions after being trained on using mobile apps and accessing digital agroadvisory services and market information.

Our impact

LWF Nepal's work is focusing on three programmatic areas: Livelihoods, Quality Services, and Protection and Social Cohesion. In addition, gender justice and social disability inclusion are cross-cutting approaches that are applied in all intervention areas. These programmatic areas are part of the LWF Nepal 2019-2024 country strategy.

In 2022, LWF Nepal implemented 12 projects with a total annual budget of €2.1 million. For 2022, the investments and results per programmatic area are as follows:



LIVELIHOODS

4,378 individuals increased their income
2,262 households increased their dietary diversity
1,766 individuals accessed productive assets for their sustainable livelihoods



PROTECTION & SOCIAL COHESION

1,573 individuals accessed psychosocial support services
205 individuals increased their knowledge on sexual and gender violence
49 Community-based organizations strengthened their advocacy capacity and implemented activity plans



QUALITY SERVICES

73,985 individuals accessed health care services
3,334 individuals were sensitized on hygiene
3,535 individuals accessed drinking water
5,150 individuals received food items for emergency relief



CROSS-CUTTING FOCUS AREAS

Gender justice
Social and Disability inclusion



"I am pleased to see positive change in the behavior of the students and teachers who participated in awareness raising sessions on gender equality, social inclusion, child rights, gender-based violence and governmental laws and preventive measures. The school is currently planning to develop policies on child protection, gender equality and social inclusion to continue to raise awareness and promote positive behavior. We are confident that students will be strong agents of change in their homes and in our society."

Santa Bahadur Khadka is one of the school teachers that participated in the gender justice POWER project funded by Australian Lutheran World Service and the Australian Government.

Contact us



Regional Program Coordinator (based in Geneva)
Susan MUIS
susan.muis@lutheranworld.org

Country Director (based in Nepal)
Bijaya BAJRACHARYA
bijaya.bajracharya@lutheranworld.org



Lutheran World Federation Nepal
Chun Devi Marg Ganesh Basti-4, Kathmandu
+977 01-42720217



More news [here!](#)



Our partners

