



THE  
LUTHERAN  
WORLD  
FEDERATION

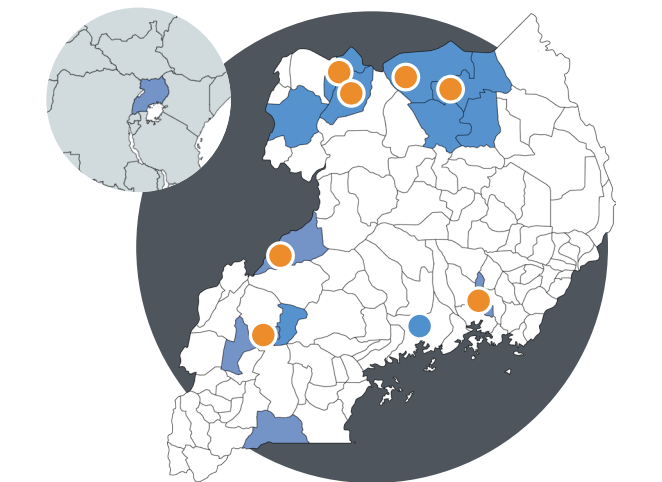
World Service

Member of alliance

**LWF Uganda**  
2023

## About us

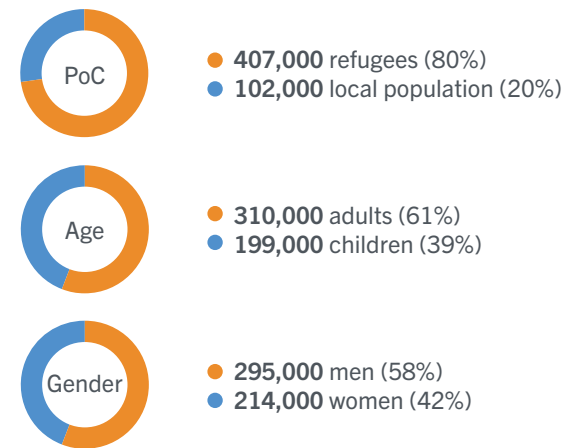
The Lutheran World Federation (LWF) World Service Uganda Programme has a proven track record of over 40 years of service in the realm of humanitarianism. Through our programs, we tirelessly serve the most vulnerable populations, extending timely, compassionate, and expert humanitarian aid to those in the most inaccessible regions. We strive to alleviate poverty, resettle those displaced as a result of insurgency and elevate the standards of living of both refugees and Ugandans.



- Country office
- Field offices
- Operations
  - Terego
  - Obongi / Adjumani
  - Lamwo
  - Kitgum
- Pader
- Agago
- Kikuube
- Hoima
- Kamwege
- Kyegegwa
- Isingiro
- Kampala
- Luuka

## Who we work with

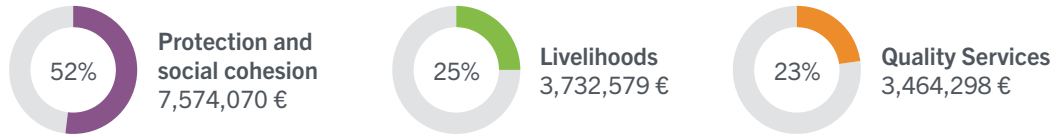
In 2022, LWF Uganda supported more than **509,000** Persons of Concern (PoC).



“I learned to replace the clutches for the motorcycles and adjust the chain. I am optimistic that the training will make me and other beneficiaries economic actors in our communities as we integrate into the labour market and interact with the host communities.”  
Alpha Salama is among the 2,000 South Sudanese and Congolese refugees participating in the vocational trainings of the Community-led Opportunities for Recovery & Empowerment (CORE) project funded by the Bureau of Population, Refugees, and Migration.

# Our impact

The overarching objective of our Country Strategy is “working with vulnerable communities in Uganda and with people on the move”, including refugees, IDPs and host communities. Our work relies on three programmatic areas: Livelihoods, Quality Services and Protection & Social Cohesion. Additionally, Gender Justice and Climate Justice are cross-cutting approaches that we apply in all sectors of intervention. In 2022, the income was EUR 18 Mio and the investments and results per programmatic area are as follows:



## PROTECTION & SOCIAL COHESION

**37,738** individuals received psychosocial services  
**167,813** most vulnerable individuals were provided with protection & safety assistance



## LIVELIHOODS

**33,808** individuals accessed vocational and lifeskills  
**16,340** individuals accessed sustainable food training and practices



## QUALITY SERVICES

**410,695** individuals accessed psychosocial services  
**167,813** most vulnerable individuals were provided with protection and safety assistance



## CROSS-CUTTING FOCUS AREAS

- Gender justice
- Climate justice
- Rights-based approach
- Community-based empowerment
- Programmatic intergration
- Cash-based programming



“We can now guide our children to do their homework, and we also keep meticulous records for our group’s daily sales and transactions, which has significantly minimized losses.”

Josephine Atek is the 42-year-old chairperson of a women’s group among South Sudanese refugees, in Palabek refugee settlement in Northern Uganda. She found herself on a transformative journey when she and her friends embarked on a six-month Functional Adult Literacy (FAL) training program offered by the LWF Uganda. It not only enhanced their self-reliant capacities but also improved their parenting skills.

# Contact us



**Regional Program Coordinator (based in Geneva)**  
 Lokiru YOHANA  
 lokiru.yohana@lutheranworld.org

**Country Representative (based in Kampala)**  
 Adriana FRANCO CHITANANA  
 adriana.chitanana@lutheranworld.org



**Lutheran World Federation Uganda**  
 Plot 1401 Gaba Road Nsambya.  
 PO Box 5827, Kampala, Uganda  
 +256 708 145 707



[More photos here!](#)



[More news here!](#)



# Our partners

