



THE
LUTHERAN
WORLD
FEDERATION

World Service

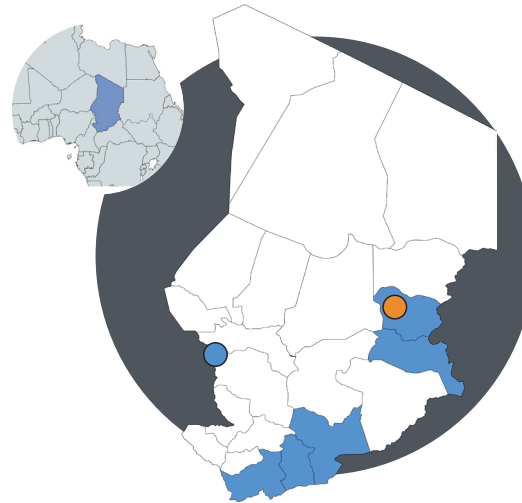
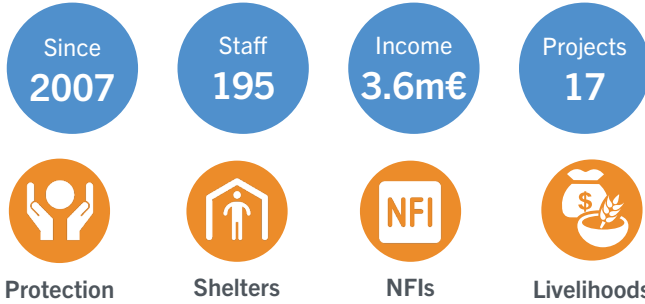
Member of **actalliance**



LWF Chad
2023

About us

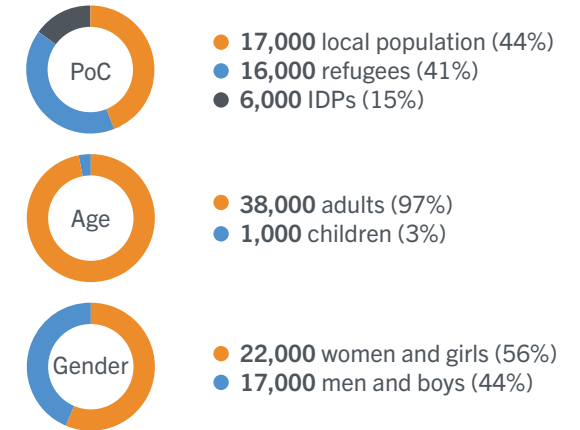
In Chad, LWF World Service is supporting refugees from Sudan, Nigeria and Central African Republic (CAR) as well as Internally Displaced Persons (IDPs), returnees and host communities. As part of its response to food insecurity and poverty, LWF World Service launched the Seeds for Solution project in 2014 in partnership with UNHCR. The aim is to improve self-reliance in refugee and local populations, while establishing peaceful coexistence mechanisms.



- Country office
 - N'Djamena
- Operations
 - Ouaddaï
 - Sila
 - Moyen-Chari
 - Mandoul
 - Logone oriental
- Field office
 - Abéché

Who we work with

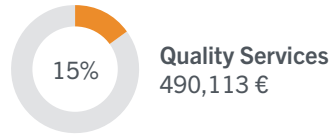
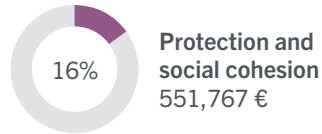
In 2022, LWF Chad supported more than **39,000** Persons of Concern (PoC).



In the village of Danamadja, nine women and six men are supported by the LWF in their market gardening activity on a plot of 4,500m² that they share. They each received EUR 80 (52,000 FCFA) to buy seeds and equipment such as a watering can, a wheelbarrow, or a shovel. Part of each harvest is consumed by the family of the market gardener while the surplus is sold on the market for a sum ranging from the equivalent of EUR 20 to EUR 30. The profits generated by this activity are of great help in financing children's schooling.

Our impact

LWF Chad's work relies on three programmatic areas: Livelihoods, Quality Services and Protection & Social Cohesion. Additionally, the country program focuses on Gender Justice and Climate Justice as focus areas to increase operations' impact. These programmatic areas underlie our 2019-2024 global strategy and Chad invested 3.4 million Euros in programming in 2022. Expenditure and its impact are as follows:



QUALITY SERVICES

11,680 households received WASH and non-food items kits.
18,710 individuals affected by floods were supported



LIVELIHOODS

14,150 households benefitted from cash distribution
11,527 individuals were supported through livelihoods projects



PROTECTION & SOCIAL COHESION

2 hotlines have been implemented to ensure safeguarding in projects' implementation
6,206 individuals participated in peacebuilding and advocacy projects



CROSS-CUTTING FOCUS AREAS

Gender justice
 Disability inclusion
 Climate change adaptation



Chad experienced unprecedented flooding in 2022 due to heavy rains that began at the end of July and continued until mid-September, displacing hundreds of thousands of people and causing significant damage to houses, infrastructure, and land. The floods affected 620,000 people across sixteen of the country's twenty-three provinces, including the capital N'Djamena. One-quarter of the city was underwater. The LWF's emergency response centered in N'Djamena and its surrounding areas. 18,710 people were supported through child protection, water, sanitation and hygiene, food distribution, non-food items and cash distribution activities.

Contact us



Regional Program Coordinator (based in Geneva)
 Clovis MWAMBUTSA
 clovis.mwambutsa@lutheranworld.org

Country Representative (based in N'Djamena)
 Myriam Valme Joseph
 myriam.valme@lutheranworld.org



Lutheran World Federation Chad
 Porte 169, Zone Rte de la Corniche,
 Quartier Sabangali
 N'Djamena



More pictures [here!](#)



Our partners

