



THE LUTHERAN WORLD FEDERATION

World Service

Member of alliance

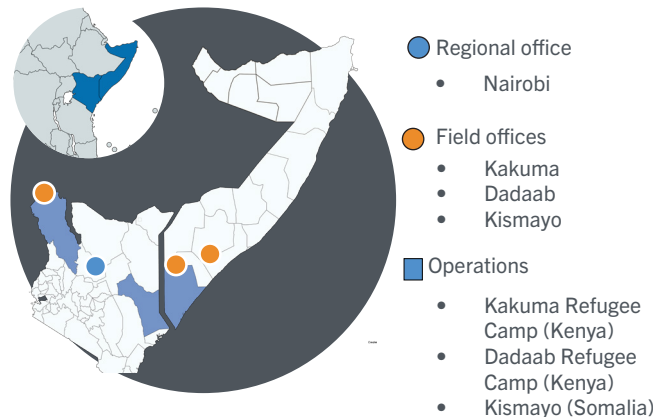
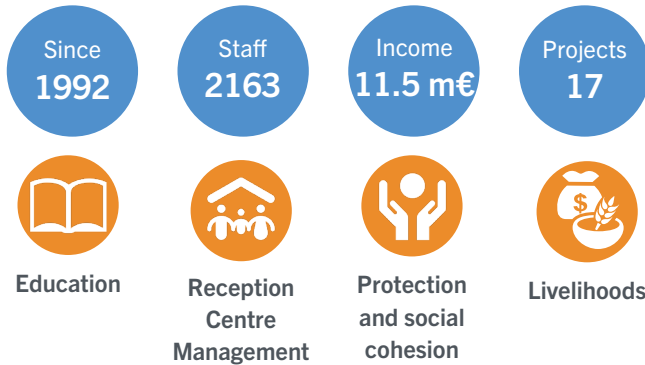


LWF
Kenya-Somalia
2024

About us

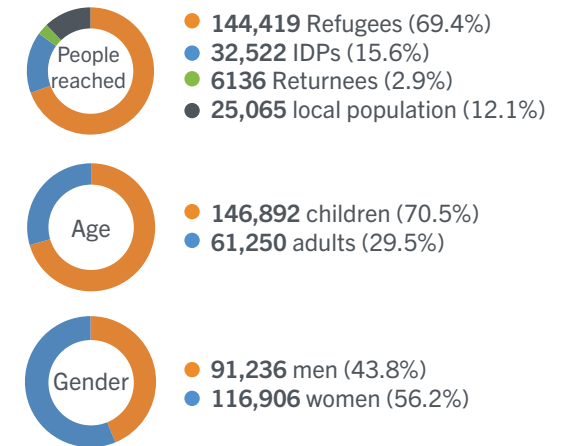
The LWF Kenya-Somalia program has been present in Kakuma and Dadaab Refugee Camps since 1992 and 2008, respectively. Over the years, we have worked to reduce vulnerability and enhance resilience, achieving key milestones such as launching host community projects in Kakuma in 1999, camp management in Dadaab, and opening an office in Kismayu, Somalia, in 2017.

Our success is directly linked to the strong collaboration with communities, local partners, and governments. We have achieved impacts through well-established and managed projects that focus on Education, Reception Centre Management, Protection and Social Cohesion, and Sustainable Livelihoods alongside climate change initiatives. Our goal is to benefit the entire community by developing long-term solutions that encourage community involvement, build networks, and establish supportive structures.



Who we work with

In 2023, LWF Kenya-Somalia supported **208,142** people.

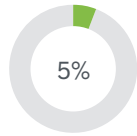


Kamaliza SAIDATI

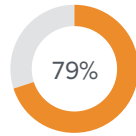
In 2011, Kamaliza, a Burundian refugee, arrived in Kakuma camp with no skills. Determined to become self-sufficient, she completed a year-long tailoring program and passed NITA grade III exams. Joining the Jitegemee tailoring group, she specialized in school uniforms and progressed to owning her own machines, increasing her productivity. As a member of the Ref-Thread Group, she began creating kitenge bags, boosting her income from Ksh 30 per day to up to Ksh 10,000. This financial stability allowed her to improve her family's food situation and cover their educational expenses, showcasing the transformative power of skill acquisition in refugee communities.

Our impact

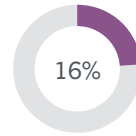
LWF Kenya-Somalia work relies on three programmatic areas: Livelihoods, Quality Services and Protection & Social Cohesion. Additionally, the country program focuses on Gender Justice and Climate Justice cross-cutting approaches to increase our operations' impact. We set the tone for our work for the next seven years with our 2025-2031 strategy, to adapt and improve our efforts to address the causes and effects of human suffering and poverty, linking local responses to national, regional and international advocacy. This will allow us to become more efficient and do more in less time, incentivizing output, focussing on how many learners stay in school and how many climate-smart livelihoods are created.



Livelihoods



Quality Services



Protection and social cohesion



LIVELIHOODS

8,206 individuals received skill development training and cash grants for diversified income generation activities
1,644 individuals received skill enhancement and small entrepreneurs' development training with market linkage interventions



QUALITY SERVICES

96,675 learners were enrolled in 57 schools managed by LWF.
20 new learning spaces created to reduce congestion, and 132 classrooms renovated to improve learning environment
1,415 teachers were engaged to significantly reduce the teacher learner ration.
582 additional desks reduced the desk/student ratio
1887 tons was provided with WFP to ensure students' health and nutritional wellbeing. (Kakuma and Dadaab)



PROTECTION & SOCIAL COHESION

1,712 persons with disabilities were either engaged in the cash for work programs or accessed specific needs related basic services
8,495 individuals received protection and psychosocial support services



Suado Hussein

13-year-old Suado Hussein from Hagadera Camp in Dadaab sees school as her second home. Living with mild cerebral palsy, Suado faced challenges attending school due to the long distance from home. A cash transfer project facilitated by LWF Dadaab with support from partners has transformed her life.

Suado now attends Amani Primary School, which offers child-friendly facilities and a special needs unit. "The intervention has helped her improve in everything," shares her father, Mustafa. Suado is one of 1,488 children with disabilities in Dadaab and Kakuma camps benefiting from this initiative, providing hope and opportunity amidst challenging circumstances.

Contact us



Regional Program Coordinator (based in Geneva)
 Jacques Sagna
 jacques.sagna@lutheranworld.org

Country Representative (based in Nairobi)
 Girma Gudina
 girma.gudina@lutheranworld.org



Lutheran World Federation Kenya-Somalia
 P.O. Box 40870 - 00100
 Gitanga Road Nairobi, Kenya
 +254723 115 737
 reception.nairobi@lutheranworld.org



Follow us [here!](#)

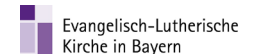


More news [here!](#)



LWF Kenya-Somalia Website

Our partners



Funded by European Union Civil Protection and Humanitarian Aid

