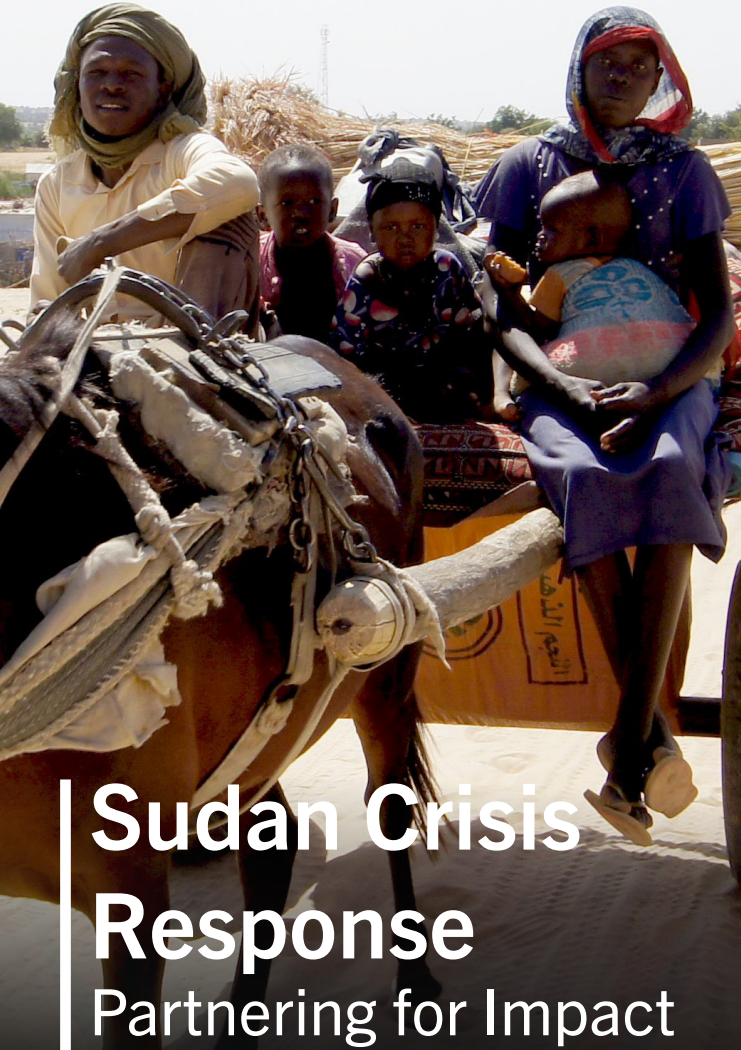




THE
LUTHERAN
WORLD
FEDERATION

World Service

member of **actalliance**



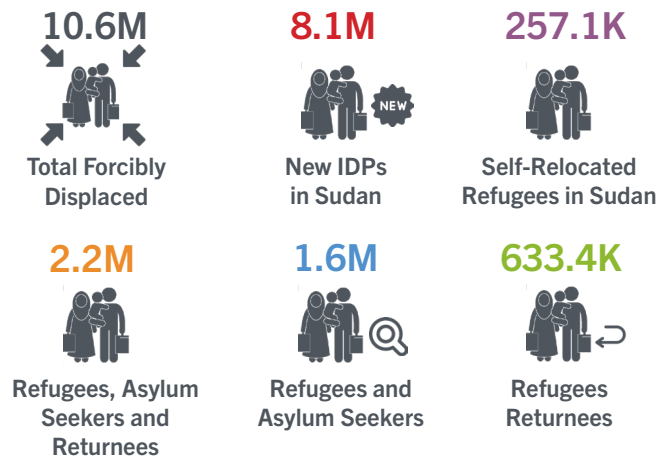
Sudan Crisis Response Partnering for Impact

Photo: C. Kaestner/LWF

Sudan Crisis at a Glance

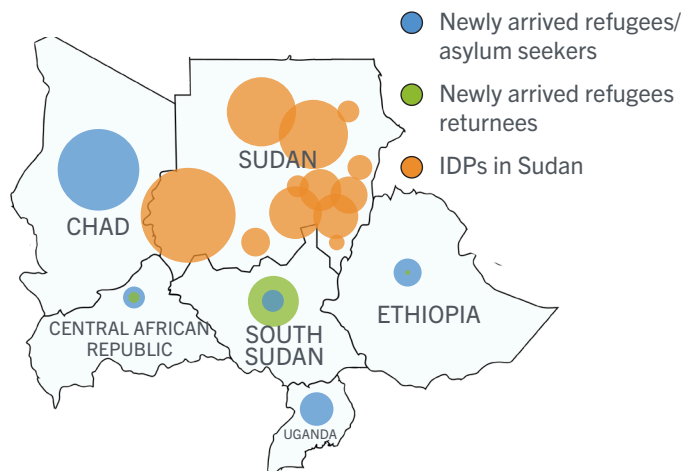
On April 15th, 2023, violent clashes in Sudan between the Sudanese Armed Forces and the Rapid Support Forces led to over 10.2 million displacements, including IDPs, asylum seekers, and refugees. The crisis, rooted in deep political instability, has severely impacted half of Sudan's population, necessitating humanitarian aid.

Sudan, previously a host for more than 1 million refugees, is now witnessing many of these individuals displaced for the second time, returning to their countries of origin amidst escalating needs.



Sources: UNHCR (22 September, 2024)

Destinations for Refugees Affected by the Sudan Conflict



Humanitarian Needs

The country is facing extreme shortages of food, water, medicine and fuel. Currently, more than half the Sudan's population (25.6 million) are facing acute food insecurity, including 8.5 million of them at emergency levels.

As people flee the conflict in Sudan, they experience severe rights violations, including sexual abuse, torture, emotional trauma, looting of personal belongings and even death.



“ Thanks to psychosocial and cash support, I am able to adequately care for my twins and their four siblings ”

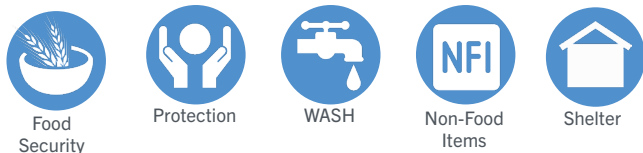
Bab Aljinan Alsair, a 28-year-old Sudanese refugee and single mother, resides in a transit center in Renk, South Sudan, with her six children. In January 2023, Alsair's life took a dramatic turn when she was separated from her husband. While he stayed behind in Darfur, she relocated to Khartoum to care for her ailing mother. As the conflict escalated, Alsair was forced to flee Khartoum, crossing into South Sudan in search of safety.

Now in Renk, Alsair clings to the hope of returning to Sudan once the war ceases. She has lost contact with her husband and other relatives still in Darfur and anxiously awaits any news from them. Determined to stay close to her homeland, she plans to remain in Renk, holding onto the hope of reuniting with her family and rebuilding their lives together once peace is restored.

LWF's Sudan Crisis Response

The Lutheran World Federation (LWF) has been actively addressing the needs of populations who have fled the conflict and currently displaced in the neighbouring countries of Chad, Ethiopia, Uganda and South Sudan. This effort is in alignment with our global strategy focusing on Climate & Resilient Livelihoods, Quality Services, and Protection & Social Cohesion.

LWF Chad



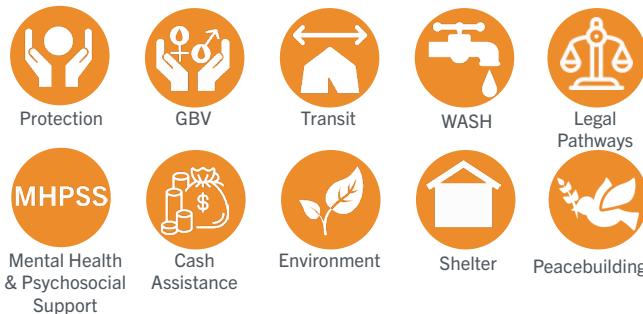
LWF Ethiopia



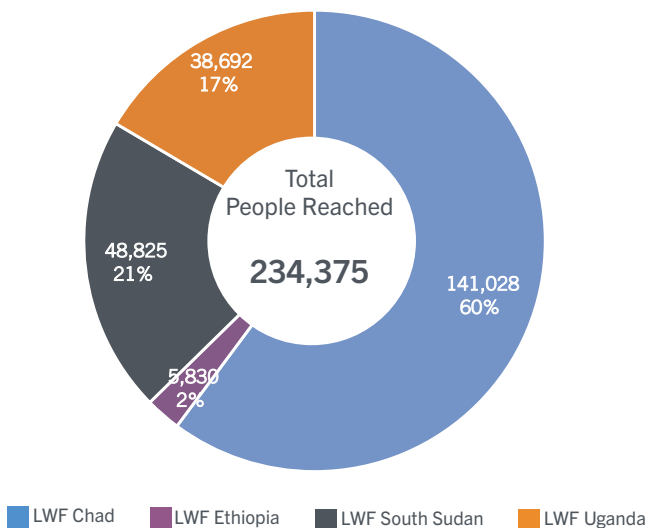
LWF South Sudan



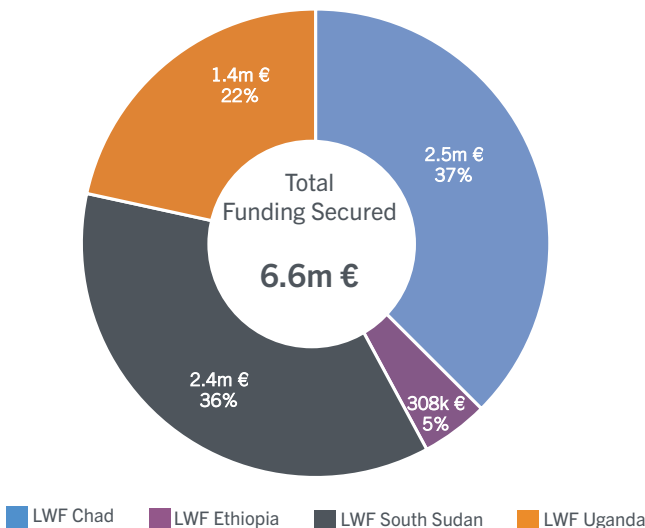
LWF Uganda



People Reached by LWF Country Programs



Funding Secured by LWF Country Programs



More support needed

“All these countries are already dealing with internal conflicts and large numbers of refugees and internally displaced people. Humanitarian aid is urgently needed to provide water, food and shelter to those who have lost everything.”

Allan Calma
LWF Global Humanitarian Coordinator

Partnership and Donations

The LWF calls on the international community to act decisively to help resolve the conflict and ensure the protection of the people of Sudan, including aid workers providing essential services.

WAYS TO PARTNER WITH US

Online Donation

Send a Check



Donate [here!](#)

The Lutheran World Federation, Chemin du Pavillon 2, CH-1218 Le Grand-Saconnex, Switzerland

Your partnership truly makes a difference. Together, a better world is possible.